

Mount Pleasant Golf Club

Handbook & Diary 2020-2021



WELCOME TO MOUNT PLEASANT GOLF CLUB

The management and committees extend a warm welcome
to all members and hope you enjoy your golf
during 2020/2021

We look forward to seeing you all throughout the year



**Station Road, Lower Stondon
Bedfordshire, SG16 6JL**

Pro Shop 01462 850999

Office 01462 810100

Bar/Bistro 01462 810104

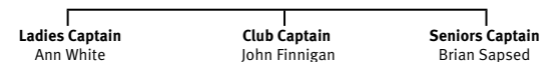
mountpleasantgolfclub.co.uk

info@mountpleasantgolfclub.co.uk

Keep in touch and up to date with all the
latest news and events



Club Structure



Committee Structure 2020



Management/Proprietors - David, Ruth, Gavin & Tara Simkins

Course Director - Gavin Simkins

General Manager - Tara Simkins

Committee Members

Competition Committee

Brian Sapsed (Chairman)

John Bennett (Treasurer)

Elizabeth Everett

Craig Pearce

Luke Fensome

Shane Cowie

Handicap Committee

John Bennett

Chris Kermath

Diane Little

Andrew Stroomer

Social Committee

Tim Baxter (Chairman)

Gill Clarke

Jenifer Webb-Tocha

Natasha Tocha

Barbara Brown

Gary Gray

Plus Ex-Officio

John Finnigan (Club Captain)

Ann White (Ladies Captain)

Brian Sapsed (Seniors Captain)

Gavin Simkins (Course Director)

Lee Brady (Head Greenkeeper)

Plus Ex-Officio

Laurence Johns (Club Vice-Captain)

George Bond (Seniors Vice-Captain)

Karen Clark (Ladies Vice-Captain)

Gavin Simkins (Course Director)

Plus Ex-Officio

John Finnigan (Club Captain)

Ann White (Ladies Captain)

Brian Sapsed (Seniors Captain)

Tara Simkins (General Manager)

The competition committee is elected to organise competitions and events for the enjoyment of the members and visitors. If members have any problems, queries or suggestions, then please contact anyone serving on the competition committee.

Message from the Captains 2020

It will be our honour and a privilege to serve as captains for 2020, and we shall endeavour to carry out our duties in a professional and warm manner. We would like to thank you for your good wishes and offers of support for the coming year

We would like to say a big thank you to last year's captains, Luke, Alison and Paul for all their hard work over the past 12 months as captains of their relevant sections.

We appreciate sincerely all the work that the management, club committees, proshop and all staff do to ensure the smooth running of the club throughout the year and look forward to working with them for the good of the club.

The course continues to be kept in excellent condition by the grounds staff and we send our appreciation to them on your behalf.

Today the club is unrecognisable to the one that opened in 1992 and has improved immensely over the years and we look forward to the completion of the extension, fingers crossed that we are to play on it in 2021.

We look forward to being supported by our vice-captain Lawrence Johns, Karen Clark and George Bond.

Captains John, Ann and Brian would like to take this opportunity to wish all our members a great year of golf.

John, Ann and Brian

Note from Course Director 2020

2019 was a better year for greenkeeping. We had some dry periods in the spring and summer but nothing too out of the ordinary, but in the autumn there was more rain than in the last few years. This water filled the ponds and got the ditches flowing, which was good to see.

We will be keeping our program for 2020 the same, as it is working well, but we always have to tweak it through the year, as and when the weather changes. We now don't have chemicals to keep worm casts from forming and we have also lost the only contact fungicide for fusarium disease, which makes management a bit trickier, especially in autumn and winter.

The course extension is progressing very well. Unfortunately, due to the wet autumn there is still about 5-10% of the area and 2 greens to be seeded. We will be maintaining the grass all this year with the aim of gradually introducing the cutting heights required for the new holes when they come into play in spring 2021.

A monthly course report is pinned to the noticeboard which list the jobs completed for the month and a plan for the next month, with the aim of keeping members up to date with the greenkeeping.

Thank you, Gavin Simkins

Men's Section - Match Dates 2020

Day	Date	Location	Against	MP-Tee Off
Saturday	11th April	Away	MOWSBURY PARK	
Saturday	2nd May	Home	TILSWORTH	10:30am
Saturday	9th May	Away	THREE LOCKS	
Saturday	13th June	Home	THREE LOCKS	10:30am
Saturday	20th June	Away	BEADLOW MANOR	
Saturday	4th July	Home	MOWSBURY PARK	10:30am
Saturday	18th July	Home	BEADLOW MANOR	10:30am
Sunday	26th July	Away	MIXED v THE BEDFORD	10am
Saturday	1st August	Away	CHALGRAVE	
Sunday	9th August	Away	THE BEDFORD	
Saturday	15th August	Away	TILSWORTH	
Sunday	23rd August	Home	THE BEDFORD	10:30am
Saturday	29th August	Home	CHALGRAVE	10:30am
Others:				
Saturday	22nd August		THE CAPTAINS TROPHY	1:30pm
Saturday	3rd October	v	MOUNT PLEASANT LADIES	10:30am
Friday	30th October	v	MOUNT PLEASANT SENIORS	9am

Away match start times vary and are subject to confirmation; please check noticeboards for exact times.

Scratch and Mid handicap teams arrange County fixtures during the season.

Ladies Section - Match Dates 2020

Day	Date	Location	Against
Saturday	4th April	Away	JOHN O'GAUNT (CS)
Thursday	9th April	Away	COLMWORTH (F)
Thursday	16th April	Home	LEIGHTON BUZZARD (CS)
Saturday	18th April	Away	THE BEDFORD (CS)
Wednesday	22nd April	Away	MIXED v WYBOSTON (F)
Monday	11th May	Home	DUNSTABLE DOWNS (CS)
Monday	18th May	Away	BEDS & COUNTY (CS)
Saturday	30th May	Home	SOUTH BEDS (CS)
Monday	8th June	Home	TILSWORTH (CS)
Friday	3rd July	Home	CHESFIELD DOWNS (F)
Thursday	9th July	Away	CHALGRAVE (F)
Thursday	16th July	Home	BEADLOW MANOR (CS)
Monday	20th July	Away	THE BEDFORDSHIRE (CS)
Tuesday	21st July	Home	AYLESBURY VALE (F)
Sunday	26th July	Away	MIXED v THE BEDFORD (F)
Wednesday	29th July	Away	PAVENHAM (CS)
Saturday	8th August	Away	THE MILLBROOK (CS)
Tuesday	11th August	Home	MIXED v WYBOSTON (F)
Thursday	13th August	Home	ASPLEY GUISE (CS)
Monday	24th August	Home	MOWSBURY PARK (F)
Thursday	3rd September	Home	WYBOSTON (F)
Thursday	15th October	Home	BOURN (F)
Others:			
Saturday	22nd August		THE CAPTAINS TROPHY
Saturday	3rd October	v	MOUNT PLEASANT MEN

NOTE: (F) = Friendly Matches & (CS) = County Shield Matches.

Match start times vary, please check noticeboards for exact times. A roll up operates on Thursday mornings arrive before 9:15, for a 9:30am tee off time, although management reserve the right to move these times, if necessary. On competition days, ladies not wishing to enter the competition may tee-off after those competing.

Seniors Section - Match Dates 2020

Day	Date	Location	Against	Tee Off
Tuesday	10th March	Home	BEADLOW ROMANS	9am
Wednesday	25th March	Home	LUTON HOO	9am
Wednesday	8th April	Home	TILSWORTH	9am
Wednesday	15th April	Away	COLMWORTH	9am
Wednesday	22nd April	Away	MIXED v WYBOSTON	9am
Wednesday	6th May	Away	LUTON HOO	9am
Wednesday	17th June	Away	CHALGRAVE	9am
Tuesday	23rd June	Away	THE MILLBROOK	8:30am
Wednesday	1st July	Away	TILSWORTH	9am
Friday	10th July	Home	CHALGRAVE	9am
Tuesday	14th July	Away	HENLOW	9am
Tuesday	21st July	Home	COLMWORTH	9am
Friday	7th August	Home	HENLOW	9am
Tuesday	11th August	Home	MIXED v WYBOSTON	9am
Tuesday	25th August	Away	THREE LOCKS	9am
Wednesday	2nd September	Away	BEADLOW ROMANS	8:30am
Tuesday	8th September	Home	THREE LOCKS	9am
Tuesday	15th September	Home	THE MILLBROOK	9am
Others:				
Tuesday	28th April		BRIAN BAKER TROPHY	8am
Saturday	22nd August		THE CAPTAINS TROPHY	1:30pm
Friday	18th September		DON HALES TROPHY	8am
Wednesday	23rd September		PAST SENIORS CAPTAINS	9am
Friday	30th October	v	MOUNT PLEASANT MEN	9am

Match start times are as listed above, please check noticeboards for exact start times.

A roll-up operates on Tuesday & Friday mornings, arriving before 8:00am for a 8:04am tee off time, although management reserve the right to move these times, if necessary.

Seniors are members aged 55 years or over and Seniors who are over 65 qualify for senior green fee rates on weekdays, up to 2pm, but excluding bank holidays.

Welcome to the Juniors Section

Juniors with a handicap are welcome to play in all club competitions, except seniors competitions, subject to the handicap limit in the entry conditions for each competition.

Junior boys with a handicap greater than 28, or do not yet have a handicap, should play from the red tees in competitions, and at all other times unless advised otherwise. Junior boys with a handicap of 28 or less should play from the yellow tees for general play and from the white tees in competitions. Junior girls play from the red tees at all times.

The club operates an equity, equality and equal opportunities policy with regards to male and female juniors competing together in Junior competitions.

Junior Handicapping

Mount Pleasant uses software from Handicap Master, that is approved by CONGU and England Golf, for the allocation and maintenance of juniors handicaps.

Child Protection Policy

Mount Pleasant Golf Club acknowledges its duty of care to safeguard the welfare of children, defined as those under 18, involved in golf within the club. All children have a right to protection, and have their particular needs taken into account.

The club's policy and procedures are based upon those of England Golf and the PGA, as the club recognises the policies of these governing bodies, as set out in guidelines for Safeguarding Children in Golf.

The club's full Child Protection policy statement is displayed on the junior notice board and the website.

Handicap Committee

The handicap committee meets, as required, anytime between February and November to discuss issues relating to handicaps and if necessary, make a general assessment of scores from competitions etc. Generally, all playing adjustments of handicaps are generated by the computer software when qualifying competition scorecards are entered on to the computer.

The club operates a system of CONGU Handicaps as set out in the revised CONGU UHS Manual:

CONGU Handicaps

For Male & Female Golfers Plus to 54.0

CONGU handicaps are recognised externally and enable players to enter both internal and external competitions (e.g. opens and county events) subject to specific handicap limits.

CONGU have introduced handicap categories, 5 & 6, for both men and women replacing the previous club handicaps. These categories allow new and developing players to track their improvements and declining players to continue to compete in competitions and with their friends.

Players with CONGU handicaps ≤ 28 for men & ≤ 36 for ladies are eligible to enter some but not all club competitions. Entry conditions should be checked when signing up for competitions.

From January 1st 2018 all players that have been allocated a CONGU handicap can now automatically go above the previous CONGU handicap maximum limits of 28 for males and 36 for females if their qualifying scores continue to be outside their buffer zones.

Obtaining a Handicap

To obtain a handicap a member should comply with the following:

1. Submit 3 - 18 or 6 - 9-hole cards, or a combination, from the Mount Pleasant course
2. Complete the details in the book in the pro shop, before playing each round
3. Print name, markers name (who must have a handicap ≤ 36) & date card
4. Ensure that marker signs the card
5. Men play from the yellow tees, ladies (and juniors) play from the red tees
6. Mark which handicap card (#1, 2 or 3 etc.) and indicate if a junior

Anyone wishing to obtain a handicap must submit any combination of 18-hole or 9-hole scorecards for a handicap to be allocated, so long as the total number of holes played is 54.

All cards are assessed for a standard of play and compared to a standard scratch score of 67 for men and 69 for ladies and juniors. Handicaps are allocated through the club computer software and then displayed on the notice board.

The handicap committee reserve the right to not allocate a handicap at all if submitted scores fail to demonstrate sufficient ability to manage the course. Handicap certificates can be issued in the form of a computer printout and when requested they can either be emailed out by John Bennett or be left in the pro shop for collection.

Annual Review Adjustments (Clause 23.1 to 23.3)

In January, the handicap committee conducts an annual review of all players' handicaps to determine if a player's exact handicap is either too high or too low and does not reflect their current playing ability. The committee can, subject to the provision of clause 23.4, reduce or increase his/her exact handicap to the figure it considers appropriate.

Continuous Handicap Review Adjustments (Clause 23.6)

Where a player records a list of seven consecutive handicap increases of 0.1, the handicap committee shall determine if the player is under handicapped as their exact handicap does not reflect their current playing ability. The handicap committee can increase the exact handicap to the figure it considers appropriate.

Handicap Adjustments

Handicap Reduction

There are four ways in which you can obtain a reduction to your handicap:

1. By competing in official club competitions and returning a net score lower than the competition standard Scratch Score (CSS) of the day.
2. By submitting supplementary scorecards and returning a net score lower than the standard scratch score (SSS) from the yellow or red tees.
3. Continuous review adjustment and annual review adjustment.

Handicap Increase

There are four ways in which your handicap will be increased:

1. By playing in official club qualifying competitions e.g. monthly medals and returning a score with a *nett differential* above the *buffer zone*, or recording a *no return*, the *exact handicap* is increased by 0.1.
2. By submitting supplementary scorecards and returning a score with a *nett differential* above the *buffer zone*, or recording a *no return*, the *exact handicap* is increased by 0.1.
3. Annual review adjustments.
4. Continuous review adjustment.

The handicapping system is changing to a world handicapping system in November 2020. Handicap adjustments and reviews will then change. The handicap committee will communicate the changes to members in advance of their introduction.

Assessment of CONGU Handicap

Handicaps are divided into the following categories:

Handicap Category	Exact Handicap	Playing Handicap
1	Plus to 5.4	Plus to 5
2	5.5 to 12.4	6 to 12
3	12.5 to 20.4	13 to 20
4	20.5 to 28.4	21 to 28
5	28.5 to 36.4	29 to 36
6	36.5 to 54	37 to 54

Exact Handicaps must be adjusted as follows:

Handicap Category	Exact Handicap	If Nett Differential is		
		Within Buffer Zone - No Change	Above Buffer Zone - Add	Below Buffer Zone
1	Plus to 5.4	0 to +1	0.1	0.1
2	5.5 to 12.4	0 to +2	0.1	0.2
3	12.5 to 20.4	0 to +3	0.1	0.3
4	20.5 to 28.4	0 to +4	0.1	0.4
5	28.5 to 36.4	0 to +5	0.1	0.5
6	36.5 to 54	0 to +6	0.1	0.6

If a player with an *exact handicap* of 11.2 returns a score with a *nett differential* of +4 his *exact handicap* becomes 11.3. If he then returns a score with a *nett differential* of -7 his *exact handicap* is reduced by $7 \times 0.2 = 1.4$ i.e. to an *exact handicap* of 9.9 and his *playing handicap* is 10 with immediate effect.

Application of Score Adjustment Using Nett Double Bogey

A player with a handicap of 15 returned a nett score of 70 in a Stroke Play qualifying competition, which equalled the CSS of the day. However, the scorecard contained an 8 at the par 4, 5th hole which is a Stroke index 6. In this instance the nett double bogey score was 7 (4+2+1) resulting in the 8 being reduced to 7 (for handicap purposes) with consequent reduction in nett score to 69 and a handicap reduction of 0.3.

Had the player made a 'no score' at the 5th hole rather than an 8 e.g. lost ball and did not put another ball into play, the effect, for handicap purposes would have been exactly the same i.e. a nett double bogey score of 7. By taking advantage of this clause and completing subsequent holes, players have the opportunity to return scores below their handicap or within their buffer zone even though they did not have a competition score.

Supplementary Scores

Players with CONGU handicaps in categories 2 to 6 may submit an unlimited number of supplementary scores per year with no restrictions on the number of cards that can be submitted per week. Special restrictions remain in place for category 1 players. Players may submit 9-hole or 18-hole supplementary cards at any course in GB & NI at which they are a member.

To submit a Supplementary card a player must:

1. Complete the details in the book in the pro shop, before playing each round
2. Print name, markers name (who must have a CONGU Handicap) & date on the card
3. Men play from the yellow tees, ladies (and juniors) play from the red tees
4. Ensure that marker and player sign the card
5. Return completed cards to Pro shop or box outside the pro shop

Note: 9-hole Supplementary scores maybe over the front or back 9-holes of the course.

Competition Details

Regular competitions are held throughout the year. The formats of these vary from monthly medals/stablefords to pairs competitions, Texas scrambles, all day medals, winter and summer knockouts and major events (competitions with cups/shields and honour boards).

For each competition, there is an entry fee, which you are required to pay before you play. These entry fees are used to fund the purchase of trophies and vouchers for most competitions. In competitions without trophies, prizes will be in the form of vouchers (amateurs may not win cash prizes), which can be redeemed for goods from the pro shop and food & drink in the clubhouse. With a few exceptions, all competitions are open to men, ladies and juniors. Please check details on entry sheets.

How to Enter a Competition

Entry sheets for all competitions are placed on the notice board in the clubhouse lobby, 3 weeks prior to the competition date. Entry books for matchplay knockout competitions are located in the pro shop, 4 weeks before the start date of the first round.

Members without a handicap cannot play in any 18 or 9-hole qualifying competitions.

18-hole Summer League -

Monthly Competitions (Handicaps Men ≤ 28 & Ladies ≤ 36)

These take place generally on the third Sunday of each month (March to October). Tee-times are drawn from an entry sheet that is placed on the notice board three weeks in advance.

New for 2020: League points are now to be awarded to the top 20 players of each competition played. The 18-hole League winner will be the player with the highest points scored from 5 of the 7 medal/stableford competitions played.

The pro shop handles the booking-in for these competitions and players must have checked in 15 minutes before their tee time to avoid a penalty.

All Day Medals/Stablefords (Handicaps Men & Ladies ≤54)

These generally take place over two days on the second Saturday and Sunday of each month and played either as medal or stableford format.

There are no set tee-times for these competitions and members play throughout the day booking their own tee-times through the pro shop. Entry fees are paid in the pro shop and players must enter their details in the competition entry book prior to play. Preferably, entrants should play their round with at least one other member who is playing in the competition. However, they may play their round with another player, or players, not playing in the competition providing the player has a certified CONGU Handicap. A player not playing in the competition must play from the General Tees.

Matchplay & Major Competitions (Handicaps Men ≤28 & Ladies ≤36)

To be eligible to enter any mens, ladies and seniors Major Trophy competitions a member must hold a Congu Competition Handicap and have played in two 18-hole qualifying club competitions (one 18-hole qualifier for the pairs competition) at Mount Pleasant since March 1st.

Major Competitions are:

Club Championships, Club Handicap Championships, Club 9-hole Tom James Championship and the Pairs Handicap Championship.

The Junior Scratch Championship, Junior Handicap Championship and all Matchplay Competitions require that all entrants must hold a Congu competition handicap at time of entry.

Note: 18-hole supplementary scorecards do not count as a qualifying club competition

Competition handicaps are allocated when a player first obtains a CONGU handicap or after they submit three qualifying scores in the previous calendar year. A player with a non-competition handicap must submit 3 qualifying scores in the current year for their handicap to return to a competition handicap.

Qualifying scores for a competition handicap are those returned in any of the following:

- a. 18-hole and 9-hole qualifying club competitions
- b. 18-hole and 9-hole supplementary scorecards

Other rules of entry will be specific to a particular competition so please read the entry sheets carefully.

When entering a matchplay competition you are agreeing to abide by any rules stated in the competition rules posted on the notice board.

Ladies-only Competitions (March to October)

Ladies only 18-hole qualifying competitions are usually held on first Thursday of the month. Ladies only 9-hole qualifying stableford competitions are usually held on the third Thursday of the month. Entry sheets are posted on the ladies' noticeboard and these Thursday competitions are open to all lady members with a handicap.

Three days a month are nominated as ladies EG medal days, 1 Saturday, 1 Sunday and 1 Thursday. These medal days are open to Ladies with playing handicaps of 40 or less. By playing in at least 4 EG medals in a year, a member may qualify to play in regional finals the following year. For these medal competitions, ladies should book their own tee times. Please see the ladies' noticeboard for a full list of EG medal days and conditions of entry.

The ladies matchplay competition is open to all lady members with a CONGU competition handicap of 40 or less.

Senior Men Competitions (Handicaps ≤36)

These are played either in medal or stableford format, and where possible, in the first and last week of the months March to October. The results from these go towards the Seniors Summer League (stableford) and the Seniors Summer Eclectic (medal). Similar winter stableford competitions are played once a month November to February. Tee-times for all these are drawn from an entry sheets posted on the notice board three weeks in advance. The pro shop handles the booking-in and players must have checked in 15 minutes before their tee time to avoid a penalty.

Club Nights (Handicaps Men & Ladies ≤54)

Every Wednesday from 1st April to 23rd September 2020, with the tee being booked from 4:30pm, depending on the competition being played

The format for 2020 is to be more structured and will consist of 6 x 9-hole summer leagues (qualifiers), 1 x 9-hole Tom James championship (qualifier), 7 x 9-hole club event nights (strokeplay, scramble, pairs betterball, pairs greensomes, team events and 3 clubs & putter etc.) and 12 x club night roll-ups (the scores will count towards an eclectic competition with prizes.)

The roll-ups are to be as previously used, where the members turn-up and join others on the tee for a 'FUN' type competition, whereas all the other competitions are a sign-up entry.

9-hole Summer League (Handicaps Men & Ladies ≤54)

On the first Wednesday of each month (April to September) there is an organised 9-hole competition on the following dates, to compete for the 9-hole summer league:

Apr 1st	May 6th	Jun 3rd	Jul 1st	Aug 5th	Sep 2nd
---------	---------	---------	---------	---------	---------

To enter, members must add their name to an entry sheet, posted on the notice board, three weeks in advance. League points are awarded to the top 20 players on the evening and the league winner will be the player with the highest points scored from 4 of the 6 competitions. The scores from these competitions will be recorded as qualifying scores in the players handicap records, in stableford format, and be used for handicap purposes.

Winter Competitions

League & Knockout Matchplay (Handicaps Men ≤28 & Ladies ≤36)

Entry books for these competitions are located in the pro shop, 4 weeks before the start date of the first round. Matches must be played by the dates shown and in accordance with the rules displayed on the club noticeboards.

Winter League (Stableford) (Handicaps Men ≤28 & Ladies ≤36)

These competitions are as shown for the monthly medals, except that they are stableford competitions. Points are awarded to all players and the league winner will be the player with the lowest number of points from 3 of the 4 competitions.

Competition Committee Responsibilities

The competition committee is responsible for entering all scorecards in to the club computer, however, with the impending introduction of the new World Handicapping System a self-entry touch screen computer has been installed in the pro shop, that enables a member to enter his/her own supplementary scorecards into Handicap Master.

The Handicap Master software adds the gross scores entered and then applies the correct playing handicap, calculates and adds stableford points and adjusts handicaps in accordance with Clause 19.

Tees

Male members MUST play from the white tees in all competitions, unless otherwise stated by the competition committee, and at all other times play MUST be from the yellow tees. Lady members play from the red tees at all times.

Notification of Results

Competition results and any revised handicaps can be viewed on Master Scoreboard and a hard copy will be posted on the noticeboard in the week following the competition.

Players Responsibilities

Scorecards must be marked by a member, with a current CONGU Handicap, and all scorecards must be completed and returned on the day of the competition to the pro shop.

Players are responsible for making sure that their card has recorded on it:

1. Members full name
2. Correct gross score for each hole (including penalty shots)
3. Current playing handicap
4. Player's signature
5. Marker's signature

Failure to comply with 1, 2, 3, 4, or 5 could result in disqualification from the competition.

Rules

All competitions are run under rules as administered by the Royal and Ancient Golf Club and members should endeavour to carry an up to date rulebook, which is available from the pro shop. Local rules are to be found on the scorecards, club noticeboard and in the pro shop. Additional rules, that are necessary from time to time, are posted on the noticeboard and displayed in the pro shop. It is the duty of each individual member to be acquainted with these rules prior to play.

Slow Play

Whilst we do not wish to spoil your game of golf, you should aim to complete your round in no more than 2 hours for 9-hole and 4 hours for 18-hole. If for any reason you are holding up people behind, you should let them play through. Remember that the position of a group on the course is immediately behind the group in front and not immediately in front of the group behind. Under the Rules of Golf, the competition committee can penalise you for slow play, if playing in a club competition as follows: First offence: 1 shot penalty, Second offence: 2 shot penalty, Subsequent offences: Disqualification.

Rules of Competition Entry

A member who knowingly writes their name on a competition entry sheet must email 24 HOURS BEFORE THE COMPETITION START TIME to advise if they are unable to play.

Non-notification or a late notification will result in a fine of the entry fee and a ban from entering club competitions for 28 days.

An unacceptable no show on the day of any medal or stableford competition will result in the enforcement of a fine of the entry fee and a 28-day ban, in accordance with the rules of competition entry. Members are also responsible for their names being on a competition entry sheet and that not knowing is not an acceptable excuse.

Etiquette

Always - rake bunkers after use, repair pitch marks on the green and replace divots on the fairway. Trolleys and buggies must NOT be taken between any greenside bunkers and greens. Be courteous to others on the course and ensure compliance with the Rules of Golf.

Complaints Procedure

If you have a complaint you should in the first instance, email or send it in writing to the chairman of competitions committee, who will then pass it on to the county committee if necessary.

Disputes or Questions

During a **STROKEPLAY** round of golf, you may come across situations where you are unsure of the rules. In this case you should complete the hole in accordance with rule 3.3a - you may play a second ball without penalty, however, you must inform your marker that you intend to invoke this rule. Prior to returning your scorecard, you should discuss the situation with a member of the competition committee or the club professional. All other disputes/questions regarding club competitions should be communicated via the competition committee. No other persons have authority to make rulings.

Competition Dress Code

Players are requested to wear collared or a roll neck shirt, tailored trousers or tailored shorts. jeans, tracksuits, shell suits, jogging trousers or beach shorts are not allowed.

Club Captains - Contact Information

	Name	Mobile	Email Address
Club Captain	John Finnigan	07866 776648	julie@premierdevelopments.build
Lady Captain	Ann White	07913 308135	edandannwhite@gmail.com
Seniors Captain	Brian Sapsed	07399 623543	briansapsed53@gmail.com

Handicap Software

The club's handicap software provider is Handicap Master, which enables members to access a website named Master Scoreboard that displays member's handicaps, club competition results and future events etc. The website can be accessed via a PC, tablet or a mobile phone by entering masterscoreboard.co.uk into the search engine of your computer, tablet or phone and by following the links provided.

Specific Winter Rules

During the winter months, November to February, the main greens remain in play during frosty conditions and the playing of all 18-hole competitions are to be played as qualifying competitions. However, if the condition of the course is considered not good enough to warrant a qualifying competition, then on the morning of the competition, and before it's commencement, it will be deemed non-qualifying (despite playing off a full-length course, main greens & tees etc.) and the scores returned will not count towards a player's handicap.

The decision that declares the competition non-qualifying will be made jointly by a representative of the competition committee, pro shop personnel and course ground staff.

Members are reminded that if temporary greens are in use then play is not permitted from the main greens, relief must be taken in accordance with Rule 13.1. Similarly, during play on normal greens relief must be taken from temporary greens in accordance with rule 13.1.

Bedfordshire County Course Card

The Bedfordshire County Golf Union operates a county card scheme, which is available to all members. The aim of the scheme is to allow members to play at other golf clubs (up to twice a year), at a reduced green fee (normally members guest rate). This scheme extends to other counties. The County Card, is free to all members. Please ask at the pro shop for more information. It is a credit card style card valid for 1 year, from 1st April to be validated in future years by the application of a sticker, so should be retained for re-use.

Other Events - Social Committee

The social committee runs events for members and visitors of the club. They also help support the Captains' charities and all playing sections of the club.

Please check noticeboards for events run throughout the year such as quiz nights, games nights, theme nights, 'Ascot' afternoon tea, race nights etc.

Societies

The club accepts societies at any time during the week and at quiet times during the weekend. Societies may book up to a year in advance. When booking, care is taken to avoid any regular bookings, however, this is not always possible and some regular times may need to be moved slightly to accommodate a group booking.

The club offers a wide variety of society packages from, 9-hole with bacon baguettes up to 27-hole with lunch and evening meal. Members wishing to bring their society or group of friends to play for the day can find more information in the society information leaflet available from the office, pro shop or website.

SmartGolfer Network - Available only to Gold & Silver Memberships

The SmartGolfer Network offers members access to other golf courses inclusive within its own membership charges. The access of network club's members to each other's courses is not open ended. Each club in the network makes available 2 tee times per day, Monday to Friday, as being available to other SmartGolfer network club members.

Once those times are taken, it is at the discretion of the host club as to whether they will allow further tee times on that day. Access can be gained at the weekends but at the discretion of the host club. On days where the host club is busy with golf societies, club competitions etc, the host club has the option to not offer any tee times on that day.

Full terms and conditions are available from the pro shop. There are currently over 30 clubs in the network which members can play 2 rounds a year. Go to **www.smartgolfer.co.uk** for details of the reciprocal golf rules and to see the list of golf clubs in the SmartGolfer Network. SmartGolfer is only available to Gold and Silver members; however, Bronze members may play with Gold and Silver members but they are required to pay the SmartGolfer society green fee.

Memberships

Mount Pleasant is an equal opportunities club whereby men and ladies pay the same fees and have the same rights. There are various categories of memberships as listed below.

Members - Bronze

These members pay an annual subscription and a reduced green fee each time they play.

Tee-times may be booked up to 15 days in advance. There are no restrictions on when these members can play. Use of Smart Golfer Network not permitted.

Members - Silver

These members pay an annual subscription with no green fees midweek, except bank holidays, and pay a bronze member rate green fee to play at weekends and bank holidays.

Tee times may be booked up to 15 days in advance.

There are no restrictions on when these members can play, however, for weekend and bank holidays, they will play as a Bronze Member and paying a reduced green fee.

Use of Smart Golfer Network permitted.

Members - Gold

These members pay an annual subscription and no green fees.

Tee-times may be booked up to 15 days in advance. There are no restrictions on when these members can play. Use of SmartGolfer Network permitted.

Joint Membership

Joint memberships are available under the Gold and Silver membership schemes. Details are available from pro shop.

Junior & Intermediate Membership

Junior and intermediate memberships are available under the Gold and Bronze membership schemes. Details are available from pro shop and guidelines for junior and intermediate members can be found in the information leaflet.

Membership Renewals

All membership renewals are on 1st March each year. Payments must be made within the payment due date. After this time non-member green fees will be charged for the next 15 days after which time the membership will cease. All adult memberships can be paid by direct debit, subject to terms & conditions, please ask at the pro shop for more details.

Members Tee Times

It is advisable for members to use their booking rights to guarantee tee times.

Non-members may book 8 days in advance so any members turning up to play without a booking may not be able to play if the course is busy until the next available tee time.

Members Account Cards

Below are some of the main points to remember when using your card.

- This is a member's benefit and your card is not transferable to others i.e. you should be present for all transactions
- You can use (although not top up) your card in the pro shop and may pay green fees and purchase pro shop goods using your card. Please note no discount is applicable The 10% discount applies to food and bar purchases
- To qualify for the discount your account must be in credit and the whole transaction/bill must be paid for via your account card. Part payment of card and cash is not accepted, you can however, top up your card mid transaction
- Your card can be topped up at the bar using cash or credit/debit card
- Minimum top up is £5.00
- There is no manual override on the till so please remember your card
- Cannot be used in conjunction with any vouchers
- No discount offered on events, such as Mother's Day and Christmas Dinners
- Should you resign your membership from the club, any monies on your card are forfeited

We hope that you continue to enjoy the benefits but would like to point out that the club reserves the right to amend these criteria at any time, without any prior notification and reserve the right to withdraw the card from any members who do not comply with the terms and conditions.

Pro Shop & Golf Lessons

The pro shop personnel will be happy to help with any of your golfing needs and questions.

Golf tuition is available all year round and members are advised to contact the pro shop for tuition rates.

Available from the pro shop are a range of club crested garments and it is the aim of the club to encourage the wearing of these garments during matches against other clubs and by members in general.

Prize Vouchers

Vouchers that are awarded to members for winning competitions can be used to purchase goods and green fees from the pro shop and food and drink in the clubhouse.

Not Valid For

- Event Tickets, such as Club Dinner, Committee events, Valentines & Mother's Day
- Golf Lessons, Club Repairs, Grips etc. and Membership or Affiliation fees

Voucher Conditions of Use

- Vouchers must be redeemed in full, no change given
- Vouchers cannot be used in conjunction with a members account card
- Vouchers cannot be used to top up a members account card
- Vouchers cannot be reduced in value to account for members discount
- Vouchers are non-transferable, must be used by bearer only
- Vouchers cannot be used in conjunction with any other offers or events
- Vouchers must be used within their expiry date, no extension permitted

The management reserve the right to amend the policy or remove this privilege at any time

Major Trophy Winners in 2019

Club Champion	-	Kiertan Sangha
Lady Champion	-	Jenifer Webb-Tocha
Seniors Champion	-	Mark Karls
Junior Champion	-	Kesir Sangha
Veterans Cup	-	Wimal Dissanayake
Spavins Matchplay	-	Grahame Barsdell
ColourDecor Pairs	-	Michael Bottazzi & Robert Ness
Seniors Pairs Matchplay	-	Ann White & Grahame Barsdell
Div I Scratch Matchplay	-	Kiertan Sangha
Div II Scratch Matchplay	-	Andy Stroomer
Ladies Matchplay (Purlys)	-	Jean Cameron
Seniors Matchplay Champion	-	Bob Parker
Men's Handicap Champion	-	Joshua Moss
Ladies Handicap Champion	-	Elizabeth Everett
Seniors Handicap Champion	-	Wimal Dissanayake
Junior Handicap Champion	-	James Stocks
Tom James Champion	-	Gary Gray
Queen Mother Trophy	-	Ben Peilow
Presidents Putter	-	Daniel Campbell & Steve Plumb
Pairs Champions (Diamond Bowl)	-	Nick Holmes & Grahame Barsdell
Winter Eclectic (2018)	-	Mark Karls
Pairs Winter Foursomes (2018)	-	Kevin Morton & Ronnie Stevens
Pairs Winter League (2018)	-	Paul Curley & Noel Loftman
Men's Player of the Year	-	Mark Karls
Ladies Player of the Year	-	Diane Little
Seniors Player of the Year	-	Brian Sapsed

2020 Calendar

January 2020						
M	T	W	T	F	S	S
		1	2	3	4	5
6	7	8	9	10	11	12
13	14	15	16	17	18	19
20	21	22	23	24	25	26
27	28	29	30	31		

February 2020						
M	T	W	T	F	S	S
					1	2
3	4	5	6	7	8	9
10	11	12	13	14	15	16
17	18	19	20	21	22	23
24	25	26	27	28	29	

March 2020						
M	T	W	T	F	S	S
						1
2	3	4	5	6	7	8
9	10	11	12	13	14	15
16	17	18	19	20	21	22
23	24	25	26	27	28	29
30	31					

April 2020						
M	T	W	T	F	S	S
		1	2	3	4	5
6	7	8	9	10	11	12
13	14	15	16	17	18	19
20	21	22	23	24	25	26
27	28	29	30			

May 2020						
M	T	W	T	F	S	S
				1	2	3
4	5	6	7	8	9	10
11	12	13	14	15	16	17
18	19	20	21	22	23	24
25	26	27	28	29	30	31

June 2020						
M	T	W	T	F	S	S
1	2	3	4	5	6	7
8	9	10	11	12	13	14
15	16	17	18	19	20	21
22	23	24	25	26	27	28
29	30					

July 2020						
M	T	W	T	F	S	S
		1	2	3	4	5
6	7	8	9	10	11	12
13	14	15	16	17	18	19
20	21	22	23	24	25	26
27	28	29	30	31		

August 2020						
M	T	W	T	F	S	S
					1	2
3	4	5	6	7	8	9
10	11	12	13	14	15	16
17	18	19	20	21	22	23
24	25	26	27	28	29	30
31						

September 2020						
M	T	W	T	F	S	S
	1	2	3	4	5	6
7	8	9	10	11	12	13
14	15	16	17	18	19	20
21	22	23	24	25	26	27
28	29	30				

October 2020						
M	T	W	T	F	S	S
			1	2	3	4
5	6	7	8	9	10	11
12	13	14	15	16	17	18
19	20	21	22	23	24	25
26	27	28	29	30	31	

November 2020						
M	T	W	T	F	S	S
						1
2	3	4	5	6	7	8
9	10	11	12	13	14	15
16	17	18	19	20	21	22
23	24	25	26	27	28	29
30						

December 2020						
M	T	W	T	F	S	S
	1	2	3	4	5	6
7	8	9	10	11	12	13
14	15	16	17	18	19	20
21	22	23	24	25	26	27
28	29	30	31			

MOUNT PLEASANT GOLF CLUB



CLUB FIXTURES & DIARY

1st March 2020

to

28th February 2021

Monday 24

Tuesday 25

Wednesday 26

Thursday 27

January & February Competition
Committee Meeting

Friday 28

Saturday 29

Sunday 1

Spavins & ColourDecor Matchplay
entry books displayed in Pro Shop



March 2020

Week 10

Monday 2

Tuesday 3

Wednesday 4

Thursday 5

LADIES MIDWEEK COMPETITION (9:30am)

GET TO KNOW YOUR GOLF CLUB 7:30pm

Friday 6

Saturday 7

ALL DAY MEDAL

LADIES EG MEDAL DAY

Sunday 8

ALL DAY MEDAL

LADIES EG MEDAL DAY

Monday 9

Tuesday 10

SENIORS v BEADLOW ROMANS (9am - HOME)
April - Seniors 1st Stableford entry sheet posted

Wednesday 11

April - Summer League entry sheet posted

Thursday 12

Friday 13

Saturday 14

Sunday 15

MARCH MONTHLY MEDAL



March 2020

Week 12

Monday 16

Tuesday 17

ST PATRICK'S DAY

Wednesday 18

Thursday 19

LADIES MIDWEEK 9-HOLE COMPETITION (9:30am)

Friday 20

SENIORS 1ST MEDAL (8am)

Saturday 21

Ladies Matchplay (Purlys) entry posted

Sunday 22

MOTHERS DAY

Monday 23

Tuesday 24

Wednesday 25

SENIORS v LUTON HOO (9am - HOME)

Thursday 26

LADIES EG MEDAL DAY

Competition Committee Meeting &
Matchplay draw

Friday 27

FRIDAY ALL DAY MEDAL

Seniors Pairs & Singles Matchplay
entry books displayed in Pro Shop

Saturday 28

April - Monthly Medal entry sheet posted

Sunday 29

START OF CLUB MATCHPLAY COMPETITIONS

BST BEGINS



Mar/Apr 2020

Week 14

Monday 30

Tuesday 31

SENIORS 1ST STABLEFORD (8am)

Wednesday 1

START OF CLUB NIGHTS

9-HOLE SUMMER LEAGUE - ROUND 1 (4:30pm)

Thursday 2

LADIES MIDWEEK COMPETITION (9:30am)

Friday 3

SENIORS & LADIES (9am)

Seniors 2nd Medal entry posted

Saturday 4

LADIES v JOHN O'GAUNT (CS - AWAY)

Sunday 5

Monday 6

SENIORS AT GREETHAM 6TH - 8TH

Tuesday 7

Senior Memorial Trophy entry sheet posted

Wednesday 8

SENIORS v TILSWORTH (9am - HOME)

CLUB NIGHT ROLL UP (4:30pm - 6pm)

May - Summer League entry sheet posted

Thursday 9

LADIES v COLMWORTH (F - AWAY)

Friday 10

ALL DAY STABLEFORD

May - Seniors 2nd Stableford entry sheet posted

GOOD FRIDAY

Saturday 11

ALL DAY STABLEFORD

MEN v MOWSBURY PARK (AWAY)

Sunday 12

ALL DAY STABLEFORD

May - Pairs Handicap Championship entry sheet posted

EASTER SUNDAY



April 2020

Week 16

Monday 13

ALL DAY STABLEFORD

EASTER MONDAY

Tuesday 14

Wednesday 15

SENIORS v COLMWORTH (9am - AWAY)

CLUB NIGHT EVENT -
MASTERS PAR 3 (STROKEPLAY - 4:30pm)

Thursday 16

LADIES v LEIGHTON BUZZARD (CS - HOME)

LADIES MIDWEEK 9-HOLE COMPETITION (9:30am)

Friday 17

Saturday 18

LADIES v THE BEDFORD (CS - AWAY)

LADIES EG MEDAL DAY

Sunday 19

APRIL MONTHLY MEDAL

LADIES EG MEDAL DAY

Monday 20

Tuesday 21

Wednesday 22

SENIORS MIXED v WYBOSTON (9am - AWAY)

CLUB NIGHT ROLL UP (4:30pm - 6pm)

Thursday 23

Competition Committee Meeting
& Matchplay draw

LADIES EG MEDAL DAY

ST GEORGES DAY

Friday 24

SENIORS 2ND MEDAL (8am)

FRIDAY ALL DAY STABLEFORD

Saturday 25

PAST CAPTAINS INVITATIONAL

Sunday 26

May - Stableford entry sheet posted

Sarah Hendricks Beauty

Sarah Hendricks Beauty would like to welcome you to her beauty salon, conveniently located at the rear of 8 Cherry Trees, Lower Stondon
I offer a full range of beauty treatments in a cosy and tranquil environment

Full details can be found at
www.sarahhendricksbeauty.co.uk

Gift vouchers are also available and make the perfect gift for any occasion

Mention this advert to receive 20% off your first treatment and make time for you

Contact: 0788 7972759
Email: sarahhendricks53@gmail.com



Monday 27

START OF SENIORS MATCHPLAY

Tuesday 28SENIORS MEMORIAL TROPHY (BRIAN BAKER)
- (8am Shotgun)**Wednesday 29**

CLUB NIGHT CAPTAIN'S ROLL UP (4:30pm)

Thursday 30**Friday 1**SENIORS 2ND STABLEFORD (8am)
Seniors 3rd Medal entry sheet posted**Saturday 2**

MEN v TILSWORTH (10:30am - HOME)

Sunday 3PAIRS HANDICAP CHAMPIONSHIP (8am)
May Texas Scramble entry sheet posted



May 2020

Week 19

Monday 4

START OF LADIES MATCHPLAY (PURLYS)

Tuesday 5

Wednesday 6

SENIORS v LUTON HOO (9am - AWAY)

9-HOLE SUMMER LEAGUE - ROUND 2 (4:30pm)

Thursday 7

LADIES MIDWEEK COMPETITION (9:30am)

Friday 8

EARLY MAY BANK HOLIDAY

Saturday 9

MEN v THREE LOCKS (AWAY)

ALL DAY MEDAL

LADIES EG MEDAL DAY

Sunday 10

ALL DAY MEDAL

LADIES EG MEDAL DAY

Monday 11

LADIES v DUNSTABLE DOWNS (CS - HOME)

Tuesday 12

June - Seniors 3rd Stableford entry sheet posted

Wednesday 13

CLUB NIGHT ROLL UP (4:30pm - 6pm)

June - Summer League entry sheet posted

Thursday 14**Friday 15****Saturday 16****Sunday 17**MAY STABLEFORD & QMC
+ MARIE CURIE CHARITY DAY



May 2020

Week 21

Monday 18

LADIES v BEDS & COUNTY (CS - AWAY)

Tuesday 19

Wednesday 20

CLUB NIGHT EVENT - PGA - 3 CLUBS
& A PUTTER (STROKEPLAY - 4:30pm)

Thursday 21

LADIES MIDWEEK 9-HOLE COMPETITION (9:30am)

Friday 22

SENIORS 3RD MEDAL (8am)

Saturday 23

Sunday 24

MAY TEXAS SCRAMBLE & TROPHY PRESENTATION
(8am Shotgun)

Monday 25**SPRING BANK HOLIDAY****Tuesday 26**Senior Men's - Mick Furr Matchplay
entry sheet posted**Wednesday 27**

CLUB NIGHT ROLL UP (4:30pm - 6pm)

Thursday 28

LADIES EG MEDAL DAY

Competition Committee Meeting

Friday 29

FRIDAY ALL DAY MEDAL

Seniors Championship entry sheet posted

Saturday 30

LADIES v SOUTH BEDS (CS - HOME)

Sunday 31

June - Monthly Medal entry sheet posted



June 2020

Week 23

Monday 1

Tuesday 2

SENIORS 3RD STABLEFORD (8am)

Wednesday 3

9-HOLE SUMMER LEAGUE - ROUND 3 (4:30pm)

Thursday 4

LADIES MIDWEEK COMPETITION (9:30am)

Friday 5

H4H ALL DAY STABLEFORD

Saturday 6

H4H ALL DAY STABLEFORD

Club Championships entry sheet posted

Sunday 7

H4H ALL DAY STABLEFORD

Monday 8

LADIES v TILSWORTH (CS - HOME)

Tuesday 9**Wednesday 10**

CLUB NIGHT ROLL UP (4:30pm - 6pm)

July - Summer League entry sheet posted

Thursday 11**Friday 12**

July - Seniors 4th Stableford entry sheet posted

Saturday 13

MEN v THREE LOCKS (10:30am - HOME)

Sunday 14

July - Mixed Greensomes entry sheet posted



PROUD TO SUPPORT MOUNT PLEASANT GOLF CLUB

WEALTH MANAGEMENT THAT IS SIMPLY PAR FOR THE COURSE

I specialise in providing face-to-face wealth management advice that is tailored to reflect individual circumstances. Placing you at the heart of everything I do, I am committed to building and sustaining long-term relationships based on trust, superior service and the quality of my initial and ongoing advice.

I can help you throughout your various life stages, providing a comprehensive range of financial solutions to address a multitude of needs and objectives. This includes investment, retirement, tax and estate planning. My experience is that everyone has their own personal concerns, responsibilities and ambitions, and that the solutions that work for one simply would not work for another.

Contact me for further information.

**JON INGARFILL APFS, CERTS CII (MP & ER),
CHARTERED FINANCIAL PLANNER**

Associate Partner

Mob: 07870 564115 Email: jon.ingarfill@sjpp.co.uk

Web: www.joningarfill.co.uk



The Partner is an Appointed Representative of and represents only St. James's Place Wealth Management plc (which is authorised and regulated by the Financial Conduct Authority) for the purpose of advising solely on the group's wealth management products and services, more details of which are set out on the group's website www.sjp.co.uk/products. The 'St. James's Place Partnership' and title 'Partner' are marketing terms used to describe St. James's Place representatives.

Monday 15

Tuesday 16

Wednesday 17

SENIORS v CHALGRAVE (9am - AWAY)

CLUB NIGHT EVENT - US OPEN -
SCRAMBLE TEAM SCRAMBLE (MIXED - 4:30pm)

July - Tom James 9-Hole
Championship entry sheet posted

Thursday 18

LADIES 'ASCOT' AFTERNOON TEA

Friday 19

SENIORS CHAMPIONSHIP (8am)
& SENIORS 4TH MEDAL

Saturday 20

MEN v BEADLOW MANOR (AWAY)

LADIES EG MEDAL DAY

Sunday 21

JUNE MONTHLY MEDAL

LADIES EG MEDAL DAY

FATHERS DAY



June 2020

Week 26

Monday 22

Tuesday 23

SENIORS v MILLBROOK (8:30am - AWAY)

Wednesday 24

CLUB NIGHT ROLL UP (4:30pm - 6pm)

Thursday 25

LADIES EG MEDAL DAY

Competition Committee Meeting

Friday 26

FRIDAY ALL DAY STABLEFORD

Saturday 27

1ST ROUND MEN'S
& LADIES CLUB CHAMPIONSHIPS

Sunday 28

MEN'S & LADIES CLUB CHAMPIONSHIPS
- FINAL ROUND

July - Presidents Day entry sheet posted

Monday 29

Tuesday 30

Wednesday 1

SENIORS v TILSWORTH (9am - AWAY)
9-HOLE SUMMER LEAGUE - ROUND 4 (4:30pm)

Thursday 2

LADIES MIDWEEK COMPETITION (9:30am)
START OF SENIOR MENS - MICK FURR MATCHPLAY

Friday 3

SENIORS 4TH STABLEFORD (8am)
LADIES v CHESFIELD DOWNS (F - HOME)

Saturday 4

MEN v MOWSBURY PARK (10:30am - HOME)

Sunday 5

MIXED GREENSOMES



July 2020

Week 28

Monday 6

Tuesday 7

Seniors Handicap Championships
entry sheet posted

Wednesday 8

TOM JAMES 9-HOLE CHAMPIONSHIP (4:30pm)

Thursday 9

LADIES v CHALGRAVE (F - AWAY)

Friday 10

SENIORS v CHALGRAVE (9am - HOME)

Saturday 11

ALL DAY MEDAL

LADIES EG MEDAL DAY

Sunday 12

ALL DAY MEDAL

LADIES EG MEDAL DAY

August - Lady Captains Day entry sheet posted

Monday 13**Tuesday 14**

SENIORS v HENLOW (9am - AWAY)

August - Seniors 5th Stableford entry sheet posted

Wednesday 15CLUB NIGHT EVENT - OPEN - OPEN TO MP
REGULARS (PAIRS BETTERBALL - 4:30pm)

August - Summer League entry sheet posted

Seniors Captains Away Day entry posted

Thursday 16

LADIES v BEADLOW MANOR (CS - HOME)

LADIES MIDWEEK 9-HOLE COMPETITION (9:30am)

Friday 17**Saturday 18**

MEN v BEADLOW MANOR (10:30am - HOME)

Sunday 19

PRESIDENTS DAY (8am Shotgun)



July 2020

Week 30

Monday 20

LADIES v THE BEDFORDSHIRE (CS - AWAY)

Tuesday 21

LADIES v AYLESBURY VALE (F - HOME)

SENIORS v COLMWORTH (9am - HOME)

Wednesday 22

CLUB NIGHT ROLL UP (4:30pm - 6pm)

Thursday 23

LADIES EG MEDAL DAY

Competition Committee Meeting

Friday 24

Saturday 25

Sunday 26

MIXED MATCH v THE BEDFORD (10am - AWAY)

August - Monthly Medal entry sheet posted

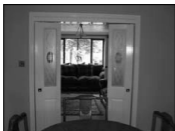
Monday 27**Tuesday 28**SENIORS HANDICAP CHAMPIONSHIP (8am)
& SENIORS 5TH MEDAL**Wednesday 29**LADIES v PAVENHAM (CS - AWAY)
CLUB NIGHT CAPTAIN'S ROLL UP (4:30pm)**Thursday 30**

LADIES SENIOR CHAMPIONSHIP

Friday 31FRIDAY ALL DAY MEDAL
Seniors 6th Medal entry sheet posted**Saturday 1**MEN v CHALGRAVE (AWAY)
Captains Trophy entry sheet posted**Sunday 2**

LADY CAPTAINS DAY (8:30am)

Chapman Property Maintenance



From start to finish we offer a professional and friendly service. Our customers are delighted with the dramatic improvements to their property.

- ✓ **General maintenance and improvements**
- ✓ **Painting and decorating**
- ✓ **Plastering**
- ✓ **Kitchen refurbishment**

Chapman Brickwork, Block Paving and Decking



- ✓ **General brickwork**
- ✓ **Block paving**
- ✓ **Hardwood and softwood decking**
- ✓ **Stone and concrete paving**
- ✓ **Brickwork refurbishment**
- ✓ **Stone circles**

Chapman Plumbing, Bathrooms and Kitchens



Our professional team offer cost effective and practical solutions to deliver complex projects within your budget.

- ✓ **Bathroom and kitchen refurbishment**
- ✓ **Kitchen cupboard door replacement**
- ✓ **Plumbing and heating projects**
- ✓ **Digital shower and bath systems**
- ✓ **Structural work where necessary**
- ✓ **Decorating and tiling**

Chapman Property Maintenance
50 Plum Tree Road,
Lower Stondon,
Henlow
Bedfordshire. SG16 6NE
Tel: 01462 813164 or 07767 442904
Email: chapmanGL2000@aol.com

Chapman
Property Maintenance

Please feel free to call for general advice and an estimate
Steve: 01462 813164 or 07767 442904

Monday 3**Tuesday 4**

SENIORS 5TH STABLEFORD (8am)

Wednesday 5

9-HOLE SUMMER LEAGUE - ROUND 5 (4:30pm)

Thursday 6

LADIES MIDWEEK COMPETITION (9:30am)

Friday 7

SENIORS v HENLOW (9am - HOME)

Saturday 8

LADIES v MILLBROOK (CS - AWAY)

ALL DAY STABLEFORD

September - Club Captains Day entry sheet posted

Sunday 9

MEN v THE BEDFORD (AWAY)

ALL DAY STABLEFORD



Monday 10

Tuesday 11

SENIORS MIXED v WYBOSTON (F - 9am - HOME)

September - Seniors 6th Stableford
entry sheet posted

Wednesday 12

CLUB NIGHT ROLL UP (4:30pm - 6pm)

September - Summer League entry sheet posted

Thursday 13

LADIES v ASPLEY GUISE (CS - HOME)

Friday 14

Saturday 15

MEN v TILSWORTH (AWAY)

LADIES EG MEDAL DAY

September - Junior Championship
entry sheet posted

Sunday 16

AUGUST MONTHLY MEDAL

LADIES EG MEDAL DAY

Monday 17

Tuesday 18

Wednesday 19

SENIOR CAPTAINS AWAY DAY

CLUB NIGHT EVENT - TONY TRINER MEMORIAL
(PAIRS GREENSOMES - 4:30pm)

Thursday 20

LADIES MIDWEEK 9-HOLE COMPETITION (9:30am)

Friday 21

SENIORS 6TH MEDAL (8am)

September - Senior Captains Day
entry sheet posted

Saturday 22

THE CAPTAINS TROPHY 1:30pm (MEN v LADIES v
SENIORS v JUNIORS)

Sunday 23

MEN v THE BEDFORD - (10:30am - HOME)

September - Handicap Championship
entry sheet posted



August 2020

Week 35

Monday 24

LADIES v MOWSBURY PARK (F - HOME)

Tuesday 25

SENIORS v THREE LOCKS (9am - AWAY)

Wednesday 26

CLUB NIGHT ROLL UP (4:30pm - 6pm)

Thursday 27

LADIES EG MEDAL DAY

Competition Committee Meeting

Friday 28

FRIDAY ALL DAY STABLEFORD

Seniors - Don Hales Trophy entry sheet posted

Saturday 29

MEN v CHALGRAVE (10:30 - HOME)

Men v Ladies entry sheet posted

Sunday 30

Monday 31

SUMMER BANK HOLIDAY

Tuesday 1

SENIORS 6TH STABLEFORD (8am)

Wednesday 2

SENIORS v BEADLOW ROMANS (8:30am - AWAY)

9-HOLE SUMMER LEAGUE - ROUND 6 (4:30pm)

Thursday 3

LADIES v WYBOSTON (F - HOME)

LADIES MIDWEEK COMPETITION (9:30am)

Friday 4

Seniors 7th Medal entry sheet posted

Saturday 5

JUNIOR CHAMPIONSHIP

Sunday 6

CLUB CAPTAINS DAY (8am)



September 2020

Week 37

Monday 7

Tuesday 8

SENIORS v THREE LOCKS (9am - HOME)

Wednesday 9

CLUB NIGHT ROLL UP (4:30pm - 6pm)

Thursday 10

Friday 11

SENIOR CAPTAINS DAY (8am Shotgun)

Saturday 12

ALL DAY MEDAL

LADIES EG MEDAL DAY

Sunday 13

ALL DAY MEDAL

LADIES EG MEDAL DAY

Monday 14

Tuesday 15

SENIORS v MILLBROOK (9am - HOME)

October - Seniors 7th Stableford
entry sheet posted

Wednesday 16

CLUB NIGHT EVENT - RYDER CUP
(TEAM EVENT - 4:30pm)

Thursday 17

LADIES MIDWEEK 9-HOLE COMPETITION (9:30am)

Friday 18

SENIORS - DON HALES TROPHY - 8am
(Captain v Vice-Captain - Teams)

Saturday 19

Sunday 20

MENS & LADIES HANDICAP CHAMPIONSHIP
MACMILLAN CHARITY DAY

Qualified, Registered and Reliable!

Services include:

- ▶ Full & Part Rewires
- ▶ Consumer Unit Upgrades
- ▶ Lighting Solutions
- ▶ Smoke Alarm Systems
- ▶ Extra Sockets
- ▶ BT Points & TV Outlets
- ▶ NAPIT Certified & Guaranteed!



Test & Electrical
Inspection
Reports from
ONLY £149.00



Fleming Electrical were extremely professional, efficient, and courteous in rewiring our entire house. They were also friendly enough to suggest further ways of future proofing our house which we hadn't considered."

t: 01462 338760 m: 07803 206023

e: info@flemingelectrical.co.uk

www.flemingelectrical.co.uk



Fleming Electrical



@FlemingElec



Monday 21

Tuesday 22

Wednesday 23 PAST SENIOR CAPTAINS COMPETITION (9am)
CLUB NIGHT EVENT - GREENKEEPERS REVENGE
(4:30pm)

Thursday 24 LADIES EG MEDAL DAY
Competition Committee Meeting

Friday 25 SENIORS 7TH MEDAL (8am)
FRIDAY ALL DAY MEDAL

Saturday 26 TOLSON CUP
Winter Foursomes & Winter League
entry books displayed in Pro Shop

Sunday 27 TOLSON CUP
October Monthly Medal entry sheet posted



Sept/Oct 2020

Week 40

Monday 28

Tuesday 29

Wednesday 30

Thursday 1

LADIES MIDWEEK COMPETITION (9:30am)

Friday 2

Seniors v Men entry sheet posted

Saturday 3

MEN v LADIES (10:30am)

Sunday 4

Monday 5

Tuesday 6

SENIORS 7TH STABLEFORD (9am)

Wednesday 7

Thursday 8

Friday 9

Saturday 10

ALL DAY STABLEFORD

Sunday 11

ALL DAY STABLEFORD



Monday 12

Tuesday 13

LADIES v SENIORS (9am)

November - Seniors 1st Winter Stableford
entry posted

Wednesday 14

Thursday 15

LADIES v BOURN (F - HOME)

LADIES MIDWEEK 9-HOLE COMPETITION (9:30am)

Friday 16

Saturday 17

LADIES EG MEDAL DAY

Sunday 18

OCTOBER MONTHLY MEDAL

LADIES EG MEDAL DAY

Monday 19

Tuesday 20

SENIORS AT GREETHAM 20TH - 22ND

Wednesday 21

Thursday 22

LADIES EG MEDAL DAY

Competition Committee Meeting & Matchplay draw

Friday 23

Saturday 24

Sunday 25

November - 1st Winter League Competition
entry sheet posted

BST ends



Oct/Nov 2020

Week 44

Monday 26

START OF WINTER FOURSOMES & WINTER LEAGUE

Tuesday 27

Wednesday 28

Thursday 29

Friday 30

MEN v SENIORS (9am)

Saturday 31

Sunday 1

START 2020 - 2021 WINTER ECLECTIC

Monday 2

Tuesday 3

SENIORS 1ST WINTER STABLEFORD (8am)

Wednesday 4

Thursday 5

Friday 6

Saturday 7

ALL DAY STABLEFORD

Sunday 8

ALL DAY STABLEFORD

REMEMBRANCE SUNDAY



Monday 9

Tuesday 10

Wednesday 11

Thursday 12

Friday 13

December - Seniors 2nd Winter Stableford
entry sheet posted

Saturday 14

28TH ANNUAL CLUB DINNER
& TROPHY PRESENTATION

Sunday 15

1ST WINTER LEAGUE COMPETITION (7:30am)

December - Ladies Christmas Fun Day
entry sheet posted

Monday 16

Tuesday 17

December - Seniors Christmas Bash
entry sheet posted

Wednesday 18

Thursday 19

Friday 20

Saturday 21

Sunday 22

December - 2nd Winter League Competition
entry sheet posted



November 2020

Week 48

Monday 23

Tuesday 24

Wednesday 25

Thursday 26

Competition Committee Meeting

Friday 27

Saturday 28

Sunday 29

December - Memorial Texas Scramble
entry sheet posted

Monday 30**ST ANDREWS DAY****Tuesday 1****Wednesday 2****Thursday 3****Friday 4****SENIORS 2ND WINTER STABLEFORD (8am)****Saturday 5****ALL DAY STABLEFORD****Sunday 6****ALL DAY STABLEFORD****LADIES CHRISTMAS FUN COMPETITION (10am)**



December 2020

Week 50

Monday 7

Tuesday 8

SENIORS CHRISTMAS 'BASH' & PRESENTATION
(8am Shotgun)

Wednesday 9

Thursday 10

Friday 11

Saturday 12

Sunday 13

2ND WINTER LEAGUE COMPETITION (8am)

Monday 14

Tuesday 15

January - Seniors 3rd Winter Stableford
entry sheet posted

Wednesday 16

Thursday 17

Friday 18

Saturday 19

Sunday 20

MEMORIAL TEXAS SCRAMBLE & PRESENTATION
(8:30am Shotgun)

January - 3rd Winter League Competition entry sheet posted



December 2020

Week 52

Monday 21

Tuesday 22

Wednesday 23

Thursday 24

CHRISTMAS EVE

Friday 25

CHRISTMAS DAY

Saturday 26

December - Captains Invitational
entry sheet posted

BOXING DAY

Sunday 27

Monday 28

Tuesday 29

Wednesday 30

Thursday 31

NEW YEARS EVE

Friday 1

NEW YEARS DAY

Saturday 2

Sunday 3

Captains Drive-In entry sheet posted



January 2021

Week 1

Monday 4

Handicap Committee Meeting

Tuesday 5

SENIORS 3RD WINTER STABLEFORD (8am)

Wednesday 6

Thursday 7

Friday 8

December Competition Committee Meeting

Saturday 9

ALL DAY STABLEFORD

Sunday 10

ALL DAY STABLEFORD

Monday 11

Tuesday 12

Wednesday 13

Thursday 14

Friday 15

February - Seniors 4th Winter Stableford
entry sheet posted

Saturday 16

Sunday 17

3RD WINTER LEAGUE COMPETITION (8am)



January 2021

Week 3

Monday 18

Tuesday 19

Wednesday 20

Thursday 21

Friday 22

Saturday 23

CAPTAINS INVITATIONAL & END OF TERM PARTY

Sunday 24

Monday 25

Tuesday 26

Wednesday 27

Thursday 28

Friday 29

28th ANNUAL GENERAL MEETING
(open to all members)

Saturday 30

Sunday 31

2021 CAPTAINS DRIVE-IN & FOURSOMES (10am)

February - 4th Winter League Competition
entry sheet posted



February 2021

Week 5

Monday 1

Tuesday 2

Wednesday 3

Thursday 4

Friday 5

SENIORS 4TH WINTER STABLEFORD (8am)

Saturday 6

ALL DAY STABLEFORD

Sunday 7

ALL DAY STABLEFORD

Monday 8

Tuesday 9

Wednesday 10

Thursday 11

Friday 12

Saturday 13

Sunday 14

4TH WINTER LEAGUE COMPETITION (7:30am)

ST VALENTINES DAY



February 2021

Week 7

Monday 15

Tuesday 16

Wednesday 17

Thursday 18

Friday 19

Saturday 20

Sunday 21

Monday 22

Tuesday 23

Wednesday 24

Thursday 25

January & February Competition
Committee Meeting

Friday 26

Saturday 27

Sunday 28

END OF 2020 - 2021 WINTER ECLECTIC
March - Monthly Medal entry sheet posted



March 2021

Week 9

Monday 1

Tuesday 2

Wednesday 3

Thursday 4

Friday 5

Saturday 6

Sunday 7

2021 Calendar

January 2021						
M	T	W	T	F	S	S
				1	2	3
4	5	6	7	8	9	10
11	12	13	14	15	16	17
18	19	20	21	22	23	24
25	26	27	28	29	30	31

February 2021						
M	T	W	T	F	S	S
1	2	3	4	5	6	7
8	9	10	11	12	13	14
15	16	17	18	19	20	21
22	23	24	25	26	27	28

March 2021						
M	T	W	T	F	S	S
1	2	3	4	5	6	7
8	9	10	11	12	13	14
15	16	17	18	19	20	21
22	23	24	25	26	27	28
29	30	31				

April 2021						
M	T	W	T	F	S	S
			1	2	3	4
5	6	7	8	9	10	11
12	13	14	15	16	17	18
19	20	21	22	23	24	25
26	27	28	29	30		

May 2021						
M	T	W	T	F	S	S
					1	2
3	4	5	6	7	8	9
10	11	12	13	14	15	16
17	18	19	20	21	22	23
24	25	26	27	28	29	30
31						

June 2021						
M	T	W	T	F	S	S
	1	2	3	4	5	6
7	8	9	10	11	12	13
14	15	16	17	18	19	20
21	22	23	24	25	26	27
28	29	30				

July 2021						
M	T	W	T	F	S	S
			1	2	3	4
5	6	7	8	9	10	11
12	13	14	15	16	17	18
19	20	21	22	23	24	25
26	27	28	29	30	31	

August 2021						
M	T	W	T	F	S	S
						1
2	3	4	5	6	7	8
9	10	11	12	13	14	15
16	17	18	19	20	21	22
23	24	25	26	27	28	29
30	31					

September 2021						
M	T	W	T	F	S	S
		1	2	3	4	5
6	7	8	9	10	11	12
13	14	15	16	17	18	19
20	21	22	23	24	25	26
27	28	29	30			

October 2021						
M	T	W	T	F	S	S
				1	2	3
4	5	6	7	8	9	10
11	12	13	14	15	16	17
18	19	20	21	22	23	24
25	26	27	28	29	30	31

November 2021						
M	T	W	T	F	S	S
1	2	3	4	5	6	7
8	9	10	11	12	13	14
15	16	17	18	19	20	21
22	23	24	25	26	27	28
29	30					

December 2021						
M	T	W	T	F	S	S
		1	2	3	4	5
6	7	8	9	10	11	12
13	14	15	16	17	18	19
20	21	22	23	24	25	26
27	28	29	30	31		

HANDICAP ALLOWANCE

Handicap or Difference	90%	7/8	3/4	7/16	3/8
1	1	1	1	-	-
2	2	2	2	1	1
3	3	3	2	1	1
4	4	4	3	2	2
5	5	4	4	2	2
6	5	5	5	3	2
7	6	6	5	3	3
8	7	7	6	4	3
9	8	8	7	4	3
10	9	9	8	4	4
11	10	10	8	5	4
12	11	11	9	5	5
13	12	11	10	6	5
14	13	12	11	6	5
15	14	13	11	7	6
16	14	14	12	7	6
17	15	15	13	7	6
18	16	16	14	8	7
19	17	17	14	8	7
20	18	18	15	9	8
21	19	18	16	9	8
22	20	19	17	10	8
23	21	20	17	10	9
24	22	21	18	11	9
25	23	22	19	11	9
26	23	23	20	11	10
27	24	24	20	12	10
28	25	25	21	12	11
29	26	25	22	13	11
30	27	26	23	13	11
31	28	27	23	14	12
32	29	28	24	14	12
33	30	29	25	14	12
34	31	30	26	15	13
35	32	31	26	15	13
36	32	32	27	16	14

Our 2020 Captains are proudly supporting



British Heart
Foundation

PARKINSON'S^{UK}
CHANGE ATTITUDES.
FIND A CURE.
JOIN US.



Essex & Herts
Air Ambulance

Your local life-saving charity

Notes

[illegible]

[illegible]

Notes

[illegible]

Notes

[illegible]

[illegible]

Notes

[illegible]

Notes

[illegible]

Notes

[illegible]

**Station Road, Lower Stondon
Bedfordshire SG16 6JL**

01462 850999

info@mountpleasantgolfclub.co.uk

www.mountpleasantgolfclub.co.uk

