

Mount Pleasant 9 hole extension

Progress report: December 17 to Mid February 18

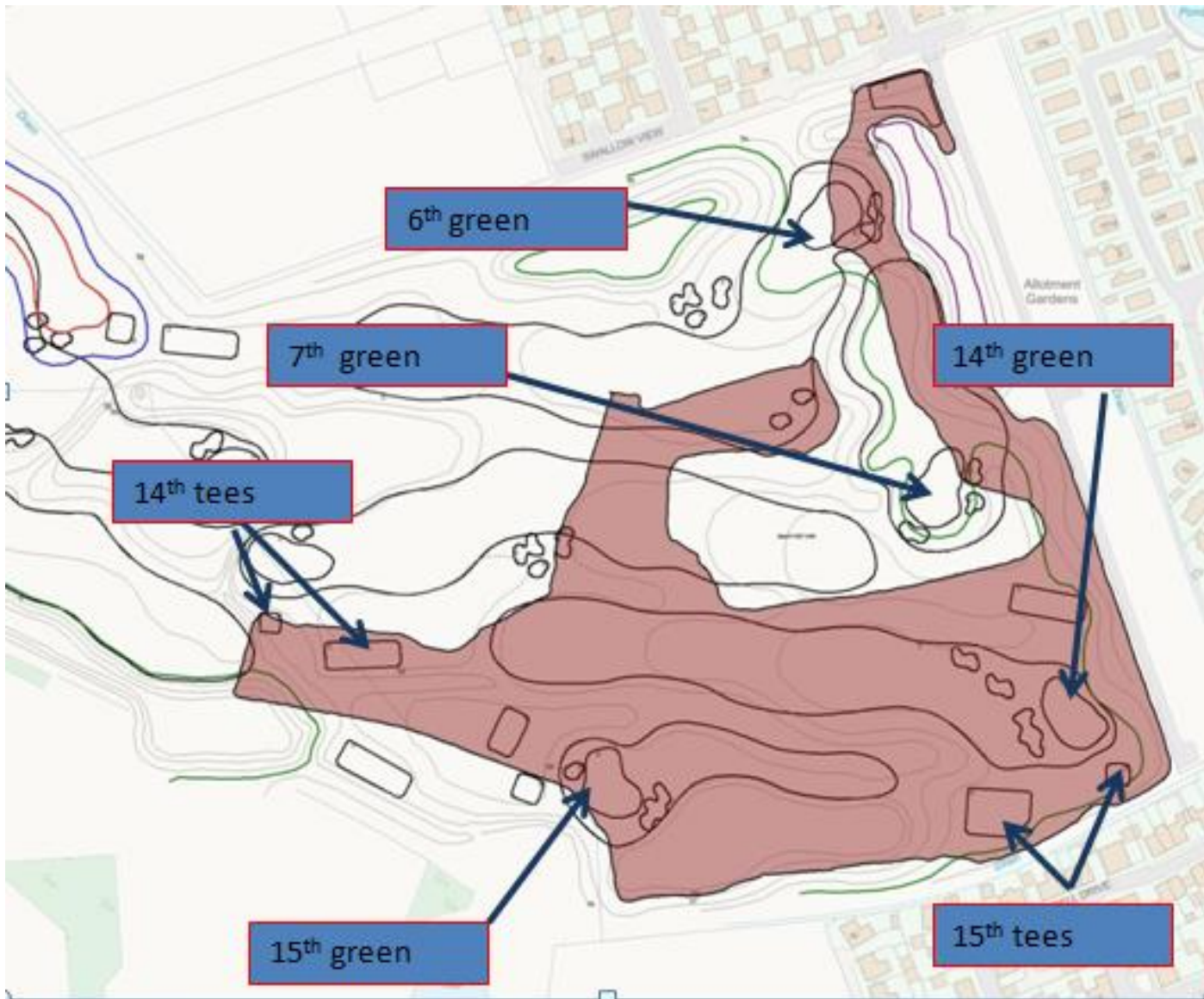
During the winter months, because of the weather and ground conditions, we are somewhat restricted in what we can achieve, fine shaping is not possible. Shorter days, increased rainfall and cold weather make for challenging conditions.

Up to 92 eight wheel lorries coming in each day, each with 12 tyres means that up to 1104 muddy tyres have to be washed individually, this becomes a challenge for staff and machines.



The winter has brought its fair share of challenges

However, we have been successful in continuing with the fill operations for the course and have been concentrating on bringing the approach to the 15th green, the 15th green and the 14th tees up to the planned height.



Extent of fill operations up to 16th February 18

The 14th and 15th holes are now ready for fine shaping, after which drainage and irrigation will be installed. A perched water table system will be incorporated into the greens consisting of drainage, a gravel carpet and a root zone mix. Once this is completed then topsoil re-spread will be undertaken on the fairways, approaches and roughs and cultivation and seeding will take place shortly afterwards. However, all of these procedures are weather dependent and continued wet

weather will inevitably mean delays. Nevertheless, we are hopeful that the weather will be on our side and seeding on the 14th and 15th holes should be completed by early summer.

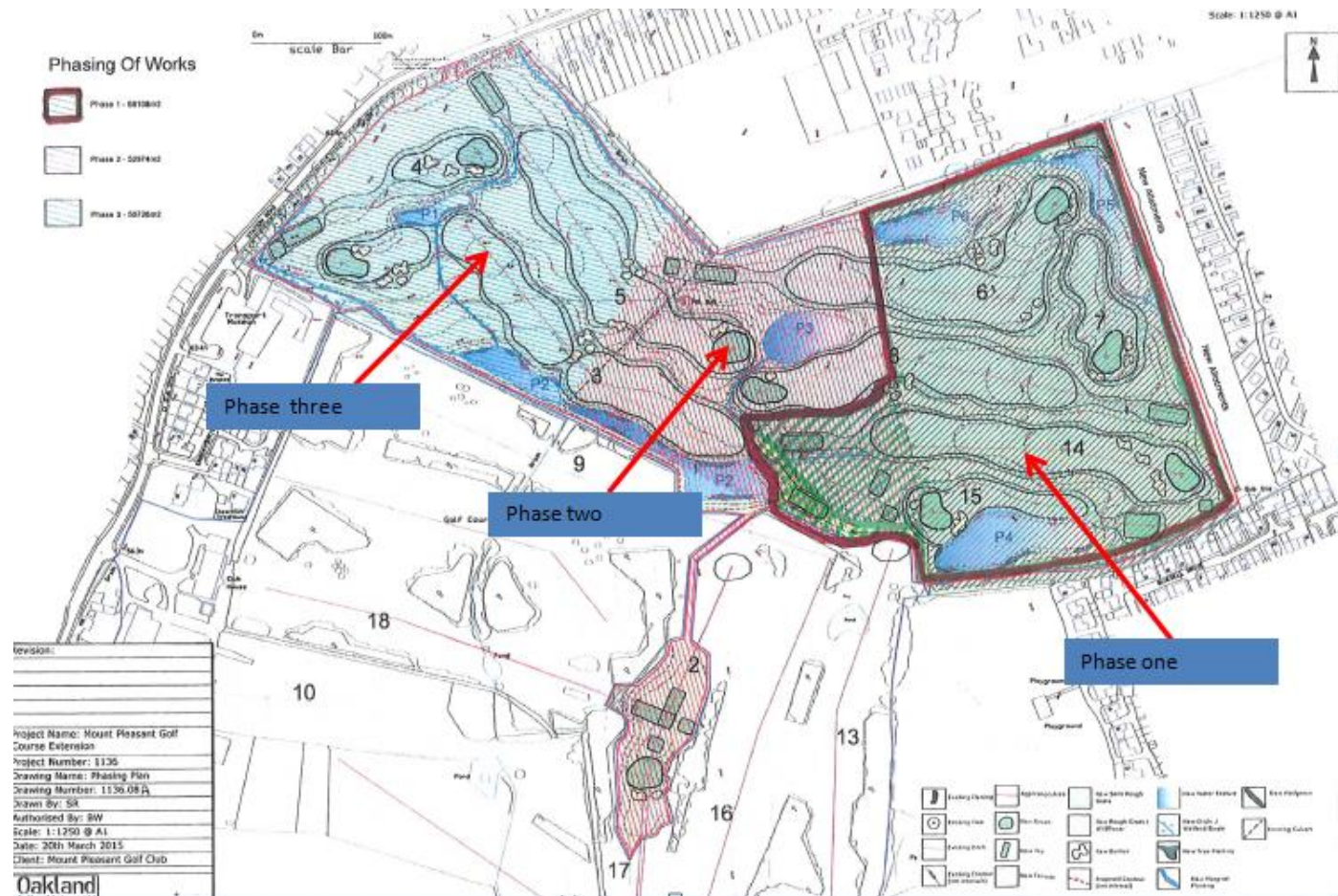


Commencement of filling operations for 14th tees



Rough shaping of the 14th tees

In the meantime we will continue to bring in fill and bring it up to the architects design. By late summer we hope to have completed the fill operations in phase 1 and should be starting on phase 2 of the 9 hole extension.



The 9 hole extension is divided into 3 phases. Fill operations for phase 1 should be completed by late summer 2018 after which phase 2 will begin.



Advantage was taken during a dry spell in October 2017 to form Lake 5



The rainfall over the winter has not been exceptional but the persistent wet weather has meant that lake 5 was filled to capacity by the end of January 2018 - 9 months earlier than anticipated.



Forming the swale/ ditch on the eastern boundary in October 2017



The allotments on the eastern boundary had flooding problems during the winter months but the forming of the swale/ditch has alleviated the problems for the allotment holders.